

OKLAHOMA PRODUCER GRANT PROGRAM

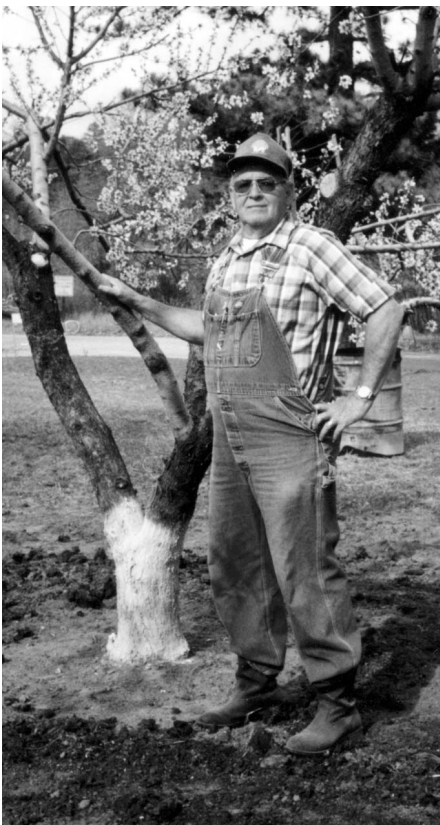
The Kerr
Center



FUNDING FARMER INNOVATION



*Grants
Awarded
Statewide!*



Oklahoma Producer Grant Program

Farmers and ranchers know their land better than anyone else. They know their problems, and they often have innovative ideas about how to solve those problems.

While good ideas may not be in short supply, money often is. This program, the first of its kind in Oklahoma, supports farmer and rancher innovation with cash grants.

Established in 1998, the Oklahoma Producer Grant program encourages an exchange of ideas and experiences between producers that will benefit all.

What is a Producer Grant?

- It funds sustainable agriculture projects that are innovative, unique, and experimental
- Two year grants are funded up to \$3,500, three year grants up to \$7,500

What kind of projects will be funded?

- Those that address one or more of eight priority areas (some years, special areas are added)
- Research, demonstration or educational projects*
- Research and demonstrations with an educational component— results are shared with other producers
- Projects with agriculture professionals (Extension, NRCS, etc.) as collaborators/cooperators given priority
- Ideas applicable to more than one farm

**A demonstration project is an on-farm demonstration of a farming/ranching practice; a research project is an on-farm test of an idea or technology. An educational project disseminates information about innovative approaches.*

Who may apply for a grant?

- Active, resident producers in Oklahoma

How are grants awarded?

- Annually, on a competitive basis
- Proposals are evaluated by an impartial technical committee of ag professionals and producers

What is the application process?

- Producers or producer groups may submit grant proposals once a year during the "Call for Proposals" time period
- Application forms are available from the Kerr Center or online
- Applications must be received by the deadline
- The technical committee evaluates grants
- Grant recipients are notified on the award date
- All applicants are contacted by the Kerr Center with results

What is sustainable agriculture?

- A sustainable agricultural system will last over the long term because it maintains or increases net farm profit, protects and conserves natural resources, and is equitable to farmers and ranchers.

Eight Priority Areas and a Few Examples

8

① **Soil Conservation, Soil Health**

Farming methods that stop erosion, increase organic matter, improve texture and structure and microorganisms

② **Water Quality, Water Conservation**

Farming methods that prevent soil erosion or filter pollutants, efficient irrigation systems

③ **Proper Management of Organic Wastes**

Non-polluting approaches to waste application, composting, less concentrated livestock and poultry systems

④ **Crops and Livestock Adapted to Oklahoma**

New crops or varieties that match climate and soil type, livestock adapted to climate and forage

⑤ **Biological Diversity**

Incorporating wildlife habitat, rotations, diversified crops and livestock, cover crops

⑥ **Environmentally-Safe Pest Management**

Approaches to weed management that eliminate or cut spraying, methods of insect and disease management that emphasize use of: beneficials, biological control agents, or innovative rotations

⑦ **Energy Conservation**

Reducing use of diesel, gasoline, or natural gas through lowering horsepower needs, reducing tillage, using renewable energy, recycling

⑧ **Farm Diversification and Increased Profitability**

Cutting expenditures for inputs, adding value to crops or livestock, diversifying farm enterprises, growing crops that receive premium prices, maximizing the use of on-farm resources, substituting management for off-farm inputs, direct marketing

2003 Grant Calendar

APPLICATIONS AVAILABLE:

September 5, 2002

APPLICATION DEADLINE:

November 21, 2002

GRANTS AWARDED:

January 9, 2003

2002 OK Producer Grant Workshop Dates and Locations

Learn about the program and how to write a successful grant proposal

Monday, Sept. 23, 6-8 p.m.

Southwestern Oklahoma
State University
1121 N. 7th St., Weatherford
Conference Center–Sunflower Rm

Tuesday, Sept. 24, 6-8 p.m.

Great Plains AVTS
Bldg. 300, Rom 301B
4500 SW Lee Blvd., Lawton

Monday, Sept. 30, 6-8 pm.

Tulsa Community College
3727 E. Apache
Engineering/Technology Bldg.
Rm 127

Tuesday, Oct 1, 6-8 pm

Indian Capital Technology
Center, Tahlequah
240 VoTech Road in Industrial
Park Complex west of town
GED room

Thursday, Oct. 24, 6-8 pm

Kerr Center, Poteau
Highway 271, five miles
south of Poteau

Further Resources

(available from Kerr Center)

- Fact Sheets: 1998, 1999, 2000, 2001, 2002 *Producer Grants* (free)
- *72 Ways to Make Agriculture Sustainable* (free)
- *Developing a Solid Proposal* (free)
- *The Next Green Revolution: Essential Steps to a Healthy, Sustainable Agriculture*

For more information/to apply, contact:

Alan Ware, Director OPGP

Kerr Center

PO Box 588

Poteau, OK 74953

918.647.9123

fax 918.647.8712

mailbox@kerrcenter.com

For more information on the program, field events, application, and descriptions of funded projects go to www.kerrcenter.com